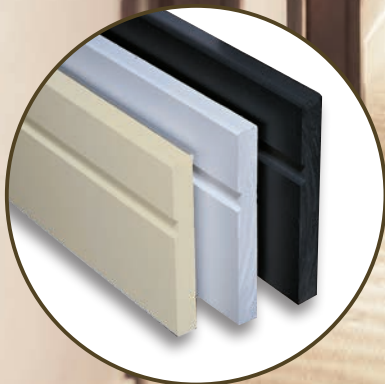


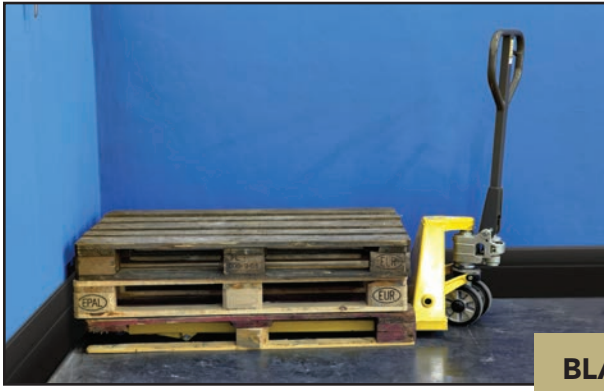
**Virtually indestructible,
environmentally friendly and an
attractive approach to total wall
protection**

DUROBASE is the unique PLAS-TEX® wall protection system, virtually indestructible and visually appealing.

Because it's made from recycled resins and can be recycled as grade #7, it addresses Green Building concerns and has been well received for use in retail shopping centers, warehouses, manufacturing facilities, hotels, motels, commercial kitchens, nursing homes and a host of other commercial applications. It's the only such system that is totally waterproof, mold resistant and very low maintenance. The system, consisting of base molding and chair rail, provides cost-effective wall protection and can be specified in several attractive architectural colors including black, gray and white. The color goes all the way through (solids). Scratches will not show, resulting in extended product life.



THE BEST WALL PROTECTION MONEY CAN BUY



The DUROBASE wall protection system is superior to everything else in the market. A product of proprietary Parkland technology that involves recycling polyethylene and polypropylene into a fiberglass-free material that has been tested by an independent laboratory and found to be highly resistant to the growth of mold, mildew and bacteria.

BLACK BASE WITH REVEAL

100% waterproof, the DUROBASE Wall Protection System consists of base molding and chair rail and is available in a variety of thickness, heights and lengths (see specifications) as well as a selection of 3 standard colors.

BASEBOARD	Virtually Indestructible	Protects Walls from Forklift Damage	Waterproof & Resists Mold	Maintenance-Free	Color-Matching Versatility	Completely Customizable	Average Lifespan (Years)
Vinyl Cove Base			●	●	●		1
Ceramic Tile			●	●			3
Wood/Lumber							3
PLAS-TEX® DUROBASE	●	●	●	●	●	●	8

FEATURES:

- Virtually indestructible, industrial strength baseboards
- 100% Waterproof
- Fiberglass free
- Does not support mold, mildew, or bacteria growth
- Chemically inert
- Color goes all the way through
- Made from 100% recycled resins
- USDA compliant / CFIA approved

BENEFITS:

- Protects walls from forklift, skid, cart, dolly, and luggage damage
- Non-absorbent: no swelling, rotting, or water discoloration
- No irritating, harmful fiberglass dust
- Hygienic: does not contribute to "sick building syndrome"
- Not affected by acids, harsh chemical solvents or petroleum products
- Scratches don't show - makes for extended product life
- Passes most interior building codes
- Contributes to Green Building: scrap can be recycled as grade #7

PRODUCT RANGE

Thicknesses: 1/4", 3/8", 5/8"
 Widths: up to 12" high
 Lengths: up to 12'
 In Stock: varies
 Other sizes available with minimum order

COLORS

Black, Gray, White
 Other colors available with minimum order.



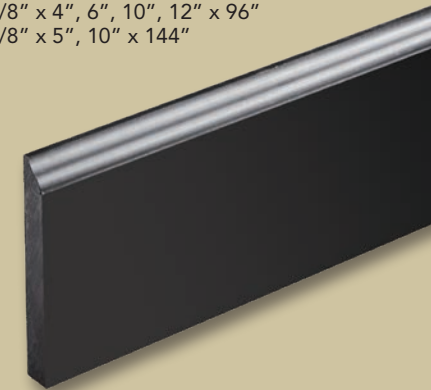
FLAT BASE



BASE WITH REVEAL

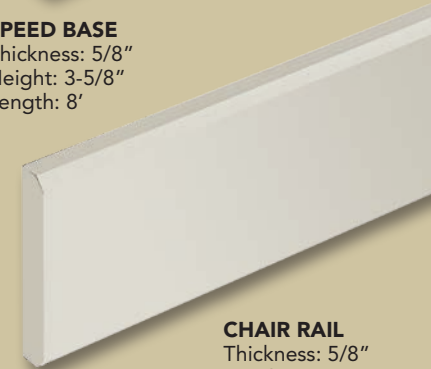
BASE

1/4" x 6" x 96"
 5/8" x 4", 6", 10", 12" x 96"
 3/8" x 5", 10" x 144"



SPEED BASE

Thickness: 5/8"
 Height: 3-5/8"
 Length: 8'



CHAIR RAIL

Thickness: 5/8"
 Height: 3"
 Length: 8'



PRODUCT CERTIFIED FOR LOW CHEMICAL EMISSIONS: UL COMIGG UL 2818

